

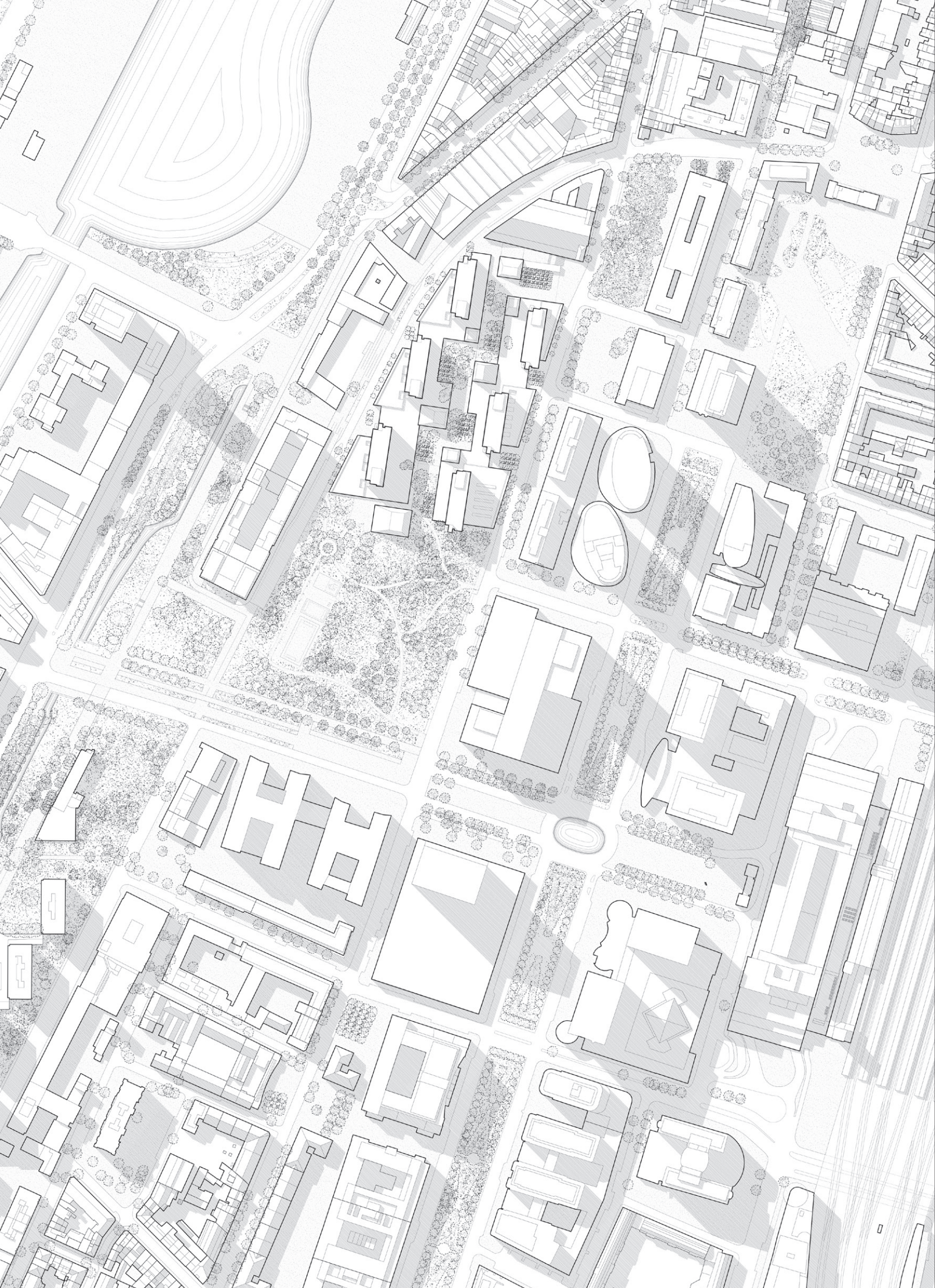
Sylvain Roumier
Accademia projects



CV ● 2020 – 2022 Master of Science in Architecture Accademia di architettura di Mendrisio · Award : Premio Boni ● 2021 Competition for sustainable housing · Fribourg ○ Competition for a lighthouse · Geneva ○ Competition for the rebuilding of a village center Villars-sous-Mont ● 2016 – 2020 Architect Giuliani Hönger Architekten · Zürich ● 2016 Organisation and scenography of the exhibition Gion A. Caminada « S'approcher au plus près des choses » · HEIA Fribourg ● 2013 – 2016 Bachelor of Arts in architecture · HEIA Fribourg ● 2015 · ERASMUS exchange · RWTH Aachen ○ Intern · LRS architectes · Geneva ● 2014 Competition for a school · Sorens · Award : third prize ○ Intern · Frei & Rezakhanlou architectes Lausanne ● 2009 – 2013 · Apprenticeship as an architectural draughtsman · Frei & Rezakhanlou architectes · Lausanne · Award : best cantonal results ● 1994 Born in Montreux

This portfolio was compiled at the end of my master's studies and presents the five project semesters completed at the Accademia di Architettura di Mendrisio.

Academic Curriculum and a few words



The northern district of Brussels occupies a strategic position in the capital. However, the six towers of the foyer Laekenois suffer from social and urban isolation, partly due to the parking slab around which the blocks are built and that annihilates any relationship to the street.

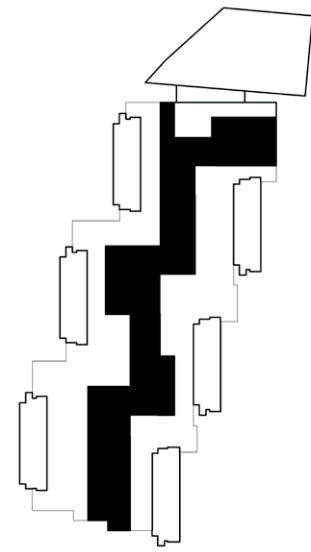
The project questions the modernist heritage and attempts to find viable ways to link this site with the city. Several visits and interviews were carried out in order to define the needs of the inhabitants and the wider relationships at the city scale. This work highlighted a rich network of associations and the lack of space to host activities. Exchanges and statistics revealed the problem of the elderly, often isolated and in a precarious situation. The project doesn't seek to deny the modernist heritage but tries to consider the solutions available to architects which, with reasonable means, would allow to revive and open urban dialogue in those often neglected places.

The first act works on the parking slab by opening a breach which results in the extension of Maximilian Park and thus inscribes the blocks in a larger system. The second act enhances the residual spaces produced by the east-west orientation of the towers by adding two-storey volumes that provide a lower horizon on the street. These additions accommodate the public programme on the street level and other types of housing (cluster) for artists and seniors or large flats for families on the first floor. The last act is the introduction of an exogenous programme dedicated to performing arts along the crevice increases visual relationship to the neighbourhood and manifests itself vertically under seven remarkable roofs. The new figure offers a nuanced reading of the modernist blocks, which are set back and forms a more mixed and complex urban ensemble.

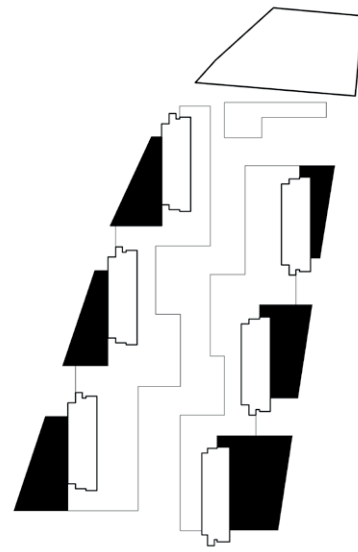
—

Diploma atelier Bonnet

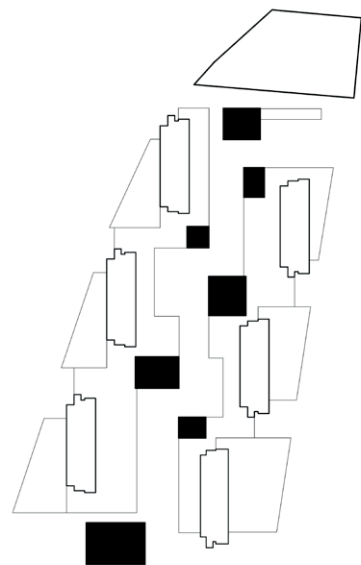
Snow white and the seven dwarfs From Brussels with love.



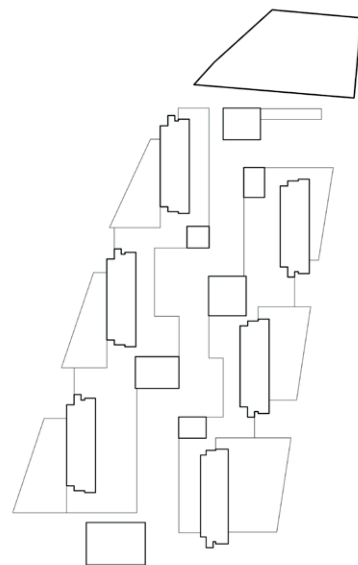
Extension of the Maximilian Park by cutting lengthwise the car parking slab. The new spaces, similar to a series of patios, offer different atmospheres



Residual spaces are used to build two-storey structures. A new horizon on a human scale takes place, in contrast to the modernist towers with their strict orientation.

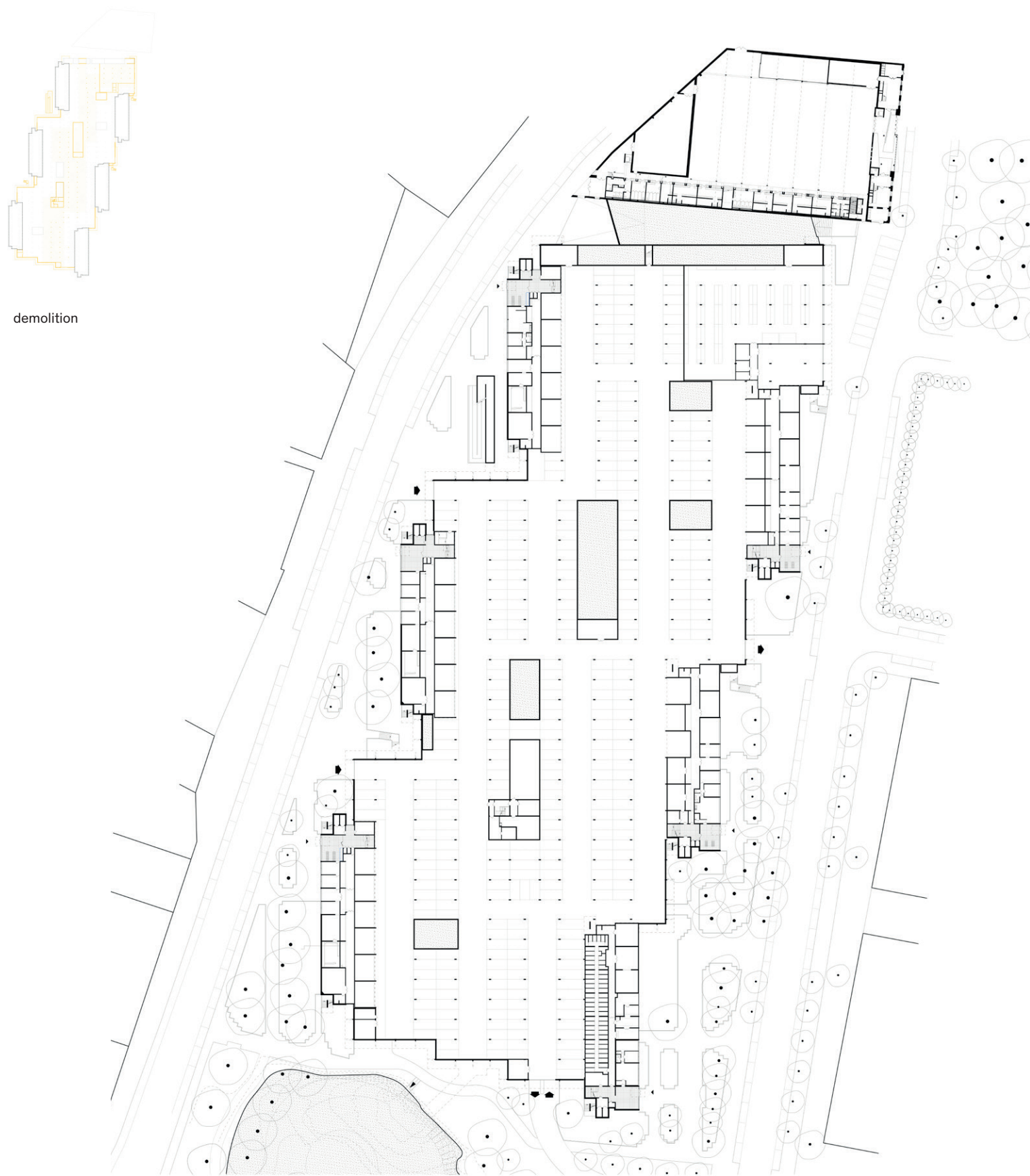


In the corners of the newly created crevice, the cultural programme manifests itself vertically and takes place under large roofs.



The new urban form is intended to be both mixed and complex. The intervention retains the 6 housing towers and a large part of the parking structure. The cultural programme gives a new identity and scale to the site.





demolition

ground floor — as found



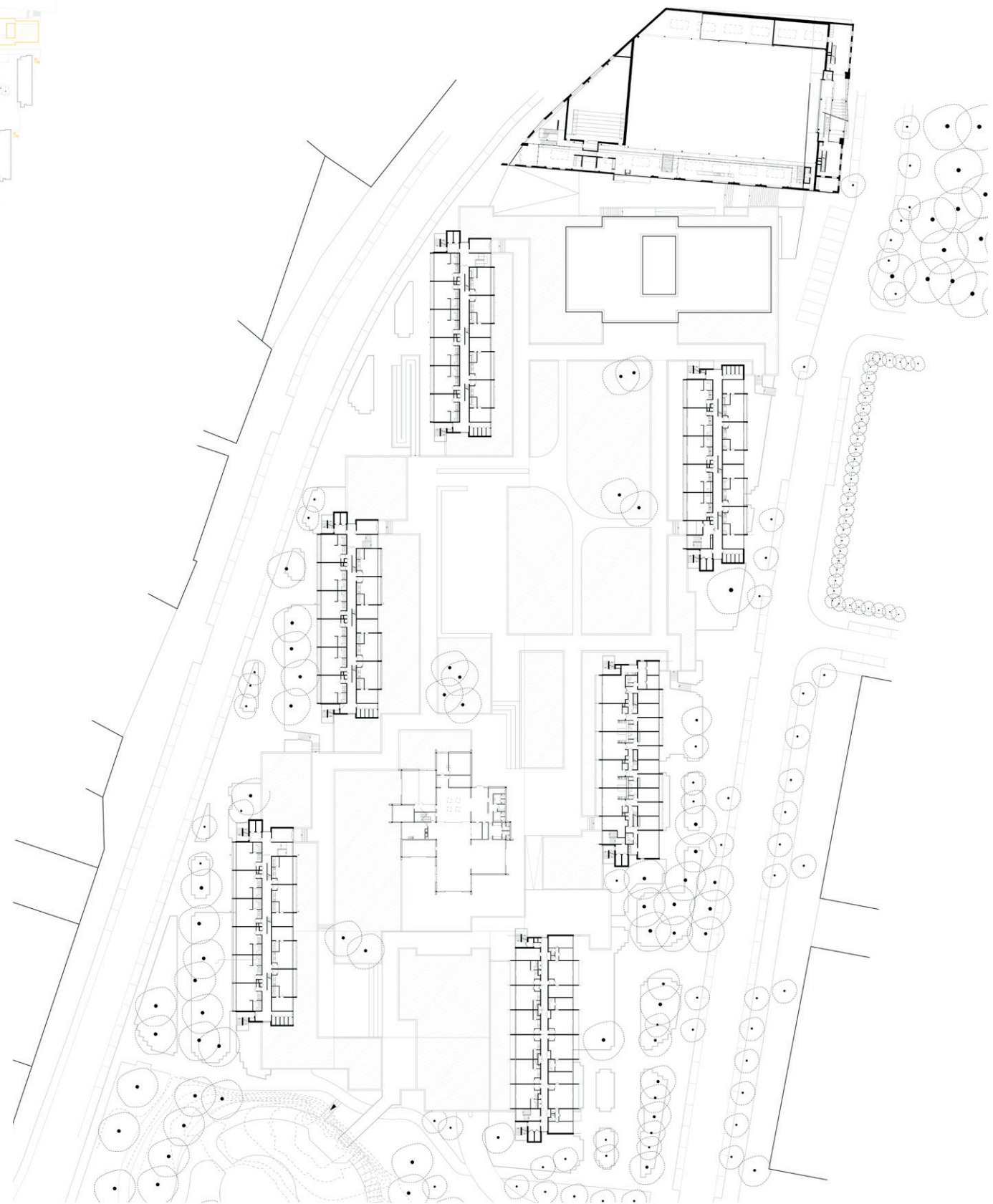
addition

ground floor — as designed





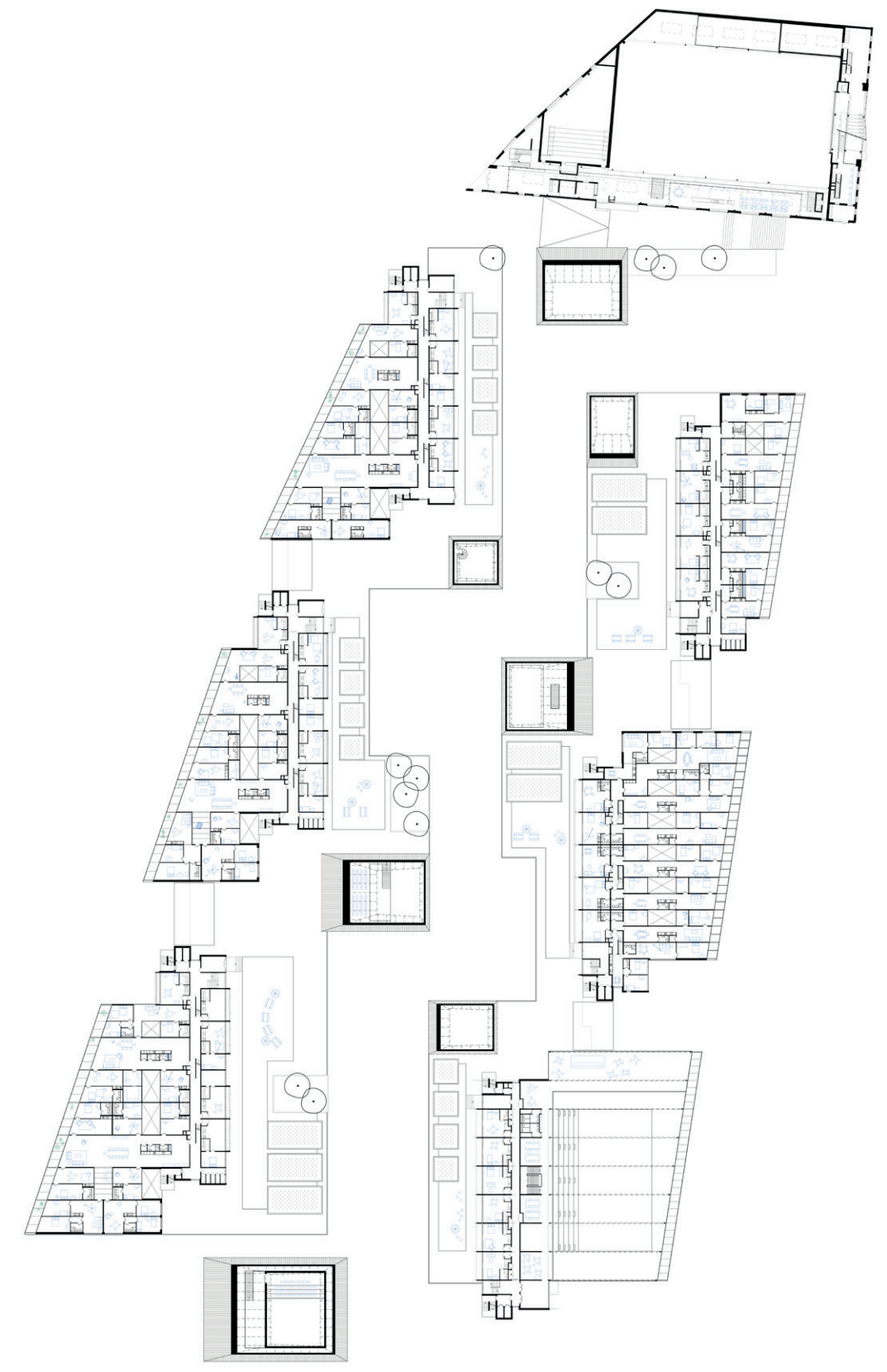
demolition



first floor — as found



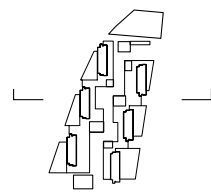
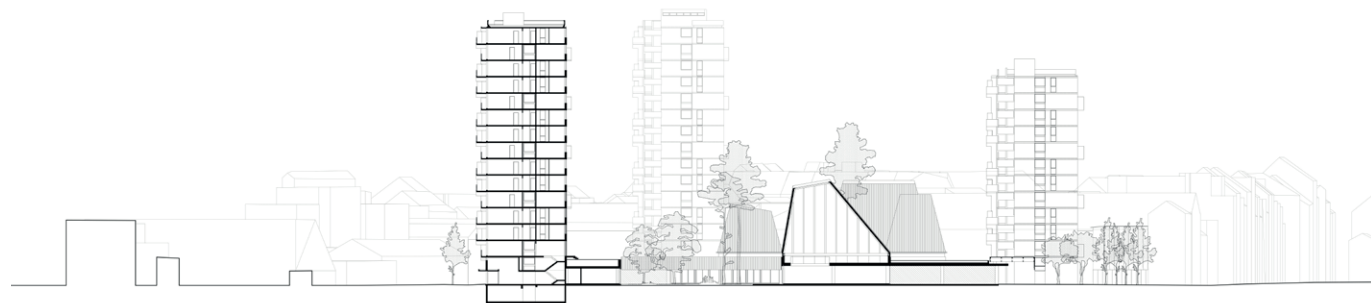
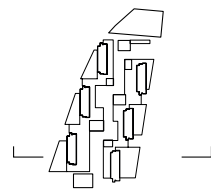
addition



first floor — as designed







cross sections





This place is the story of a land sculpted by the seas and winds. In the north of Galicia: «It's a rock! ... it's a peak! ... it's a cape! Surrounded by the oceans, exposed to the elements, two villages have nevertheless managed to adapt to the local conditions, in the first case sheltering from the wind and in the second erecting walls to protect agriculture and pastures. A balance between land and sea resources was established, allowing for a sustainable use of the territory.

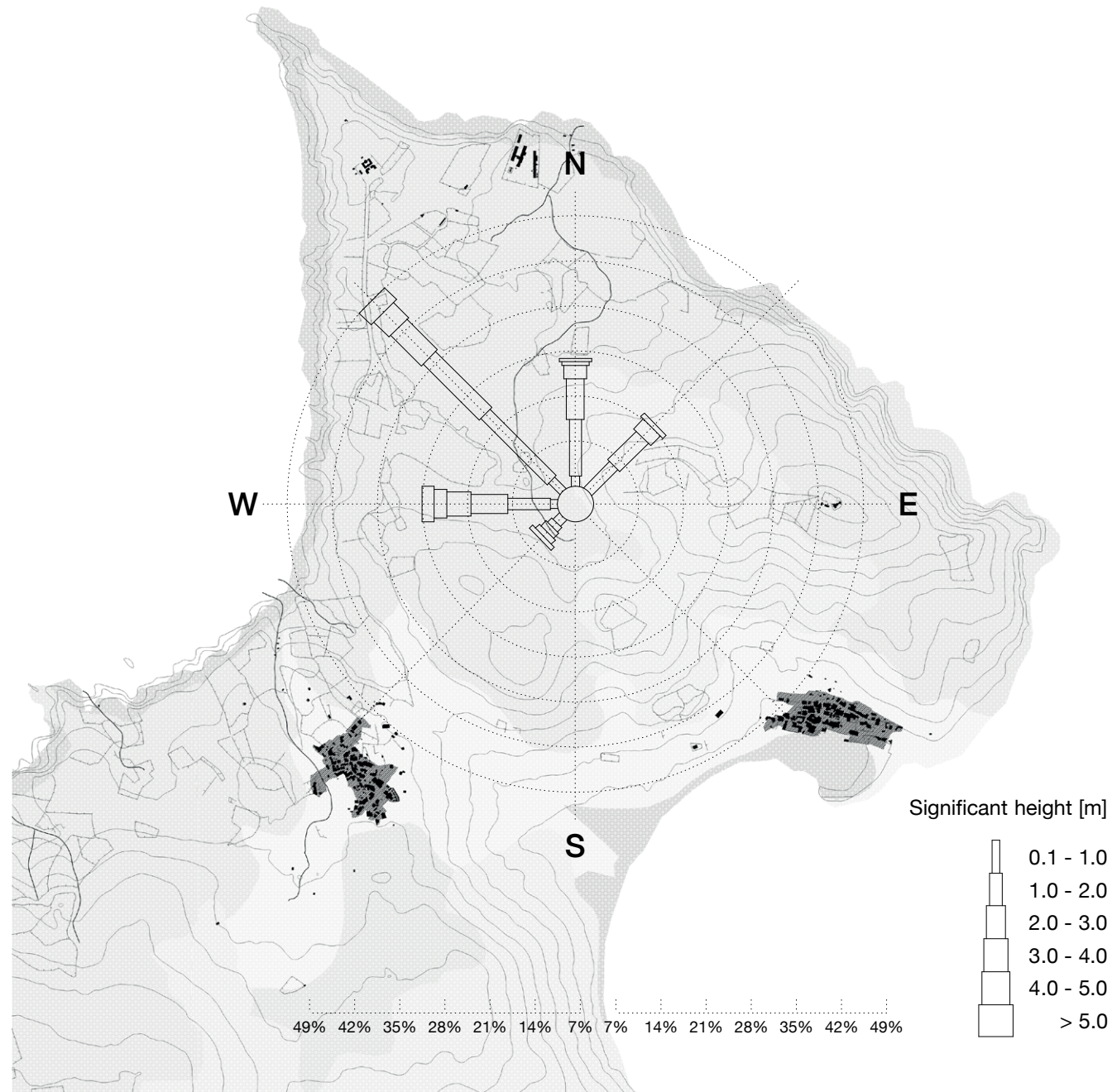
From the mid-20th century, to satisfy the paper industry, eucalyptus forests were planted throughout the north of the country, jeopardizing traditional land use. The walls, now paltry, as a metaphor for the traces of past lives, are slowly fading with time, like whispers lost in the wind. The project materializes this state of fact by superimposing the different strata of history in its construction.

If wind is structure and space, then there is no project without wind. It is multiform and no longer depends on the architect but on local conditions. Like the previous walls, it represents the material transposition of a physical force invisible to the eye. From one site to another, the structure can be transported, reduced to the strict minimum by precise and mathematical optimisation. The sail becomes space, envelope and light.

—

Atelier Arrhov
with David Welding

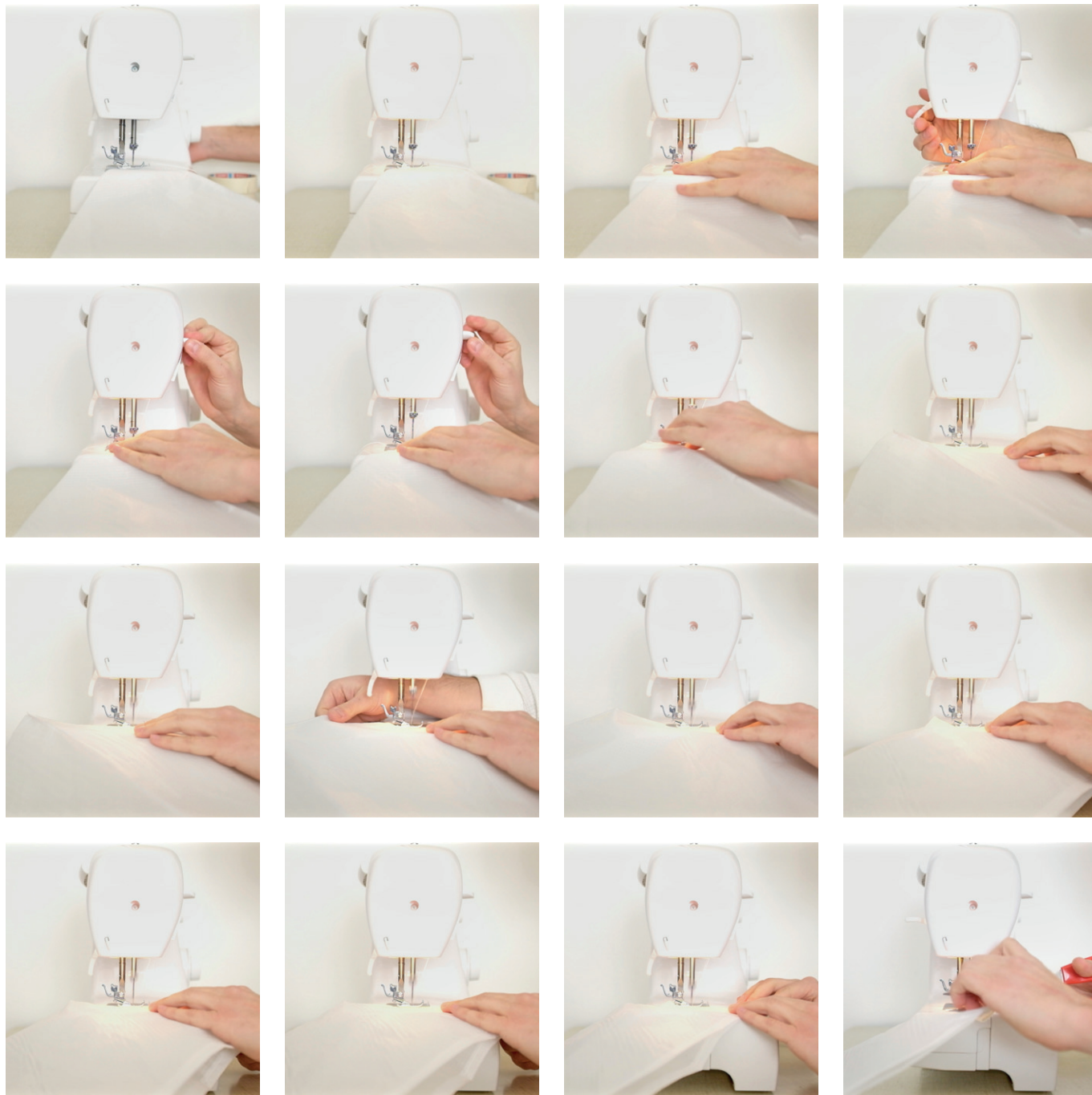
How Simple can we built? Esteca de Bares, Galice



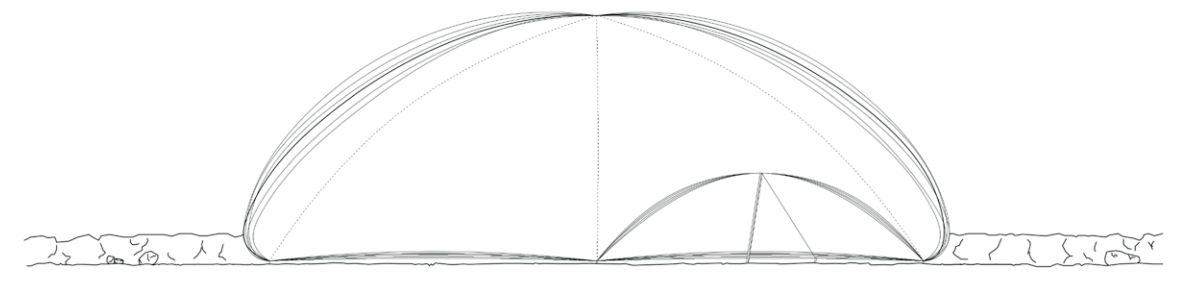
wind rose and territorial map



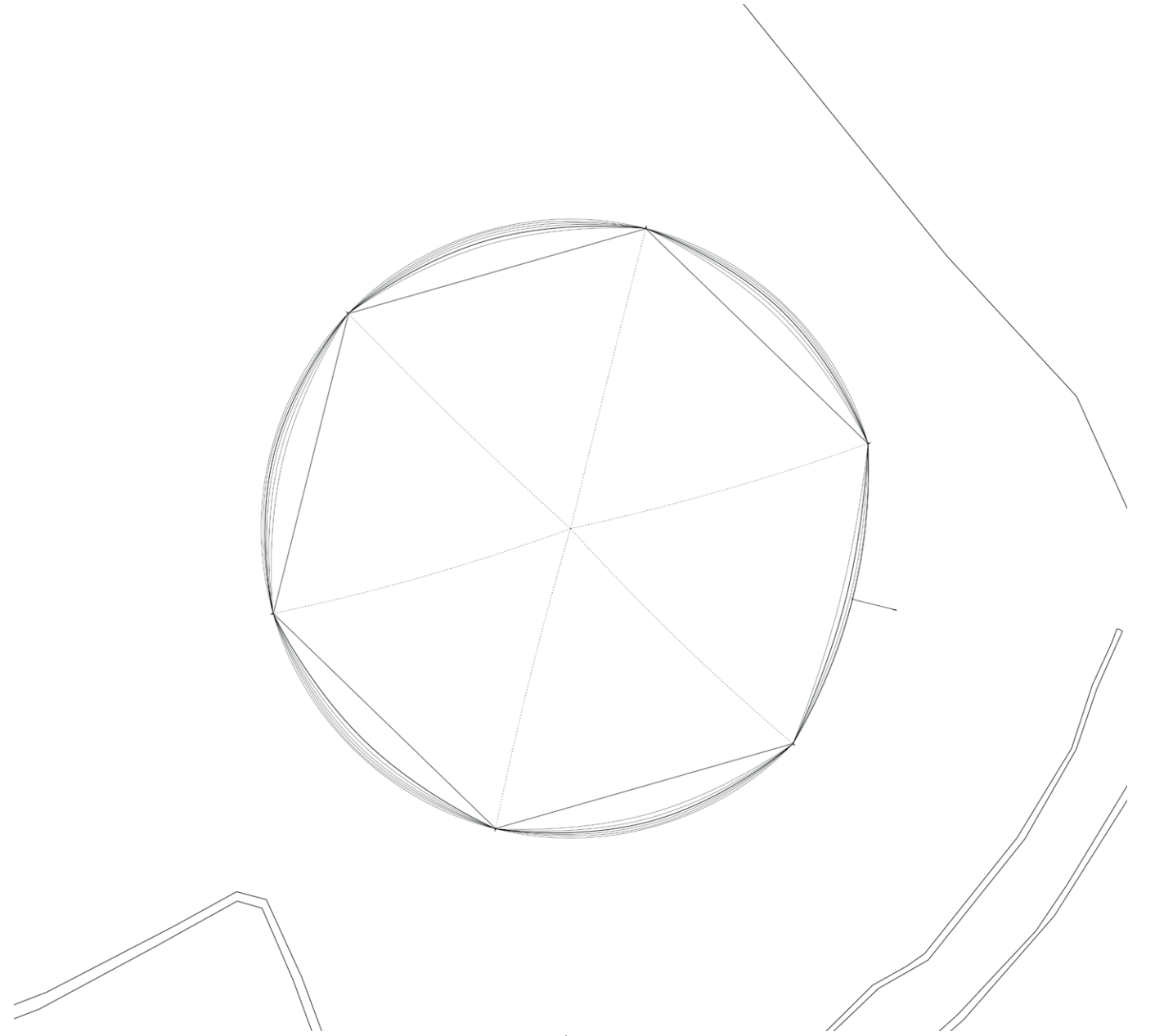
Antfarm, Pillow, temporary installation in Freestone California, 1970



the construction of the envelope is similar to the work involved in making boat sails

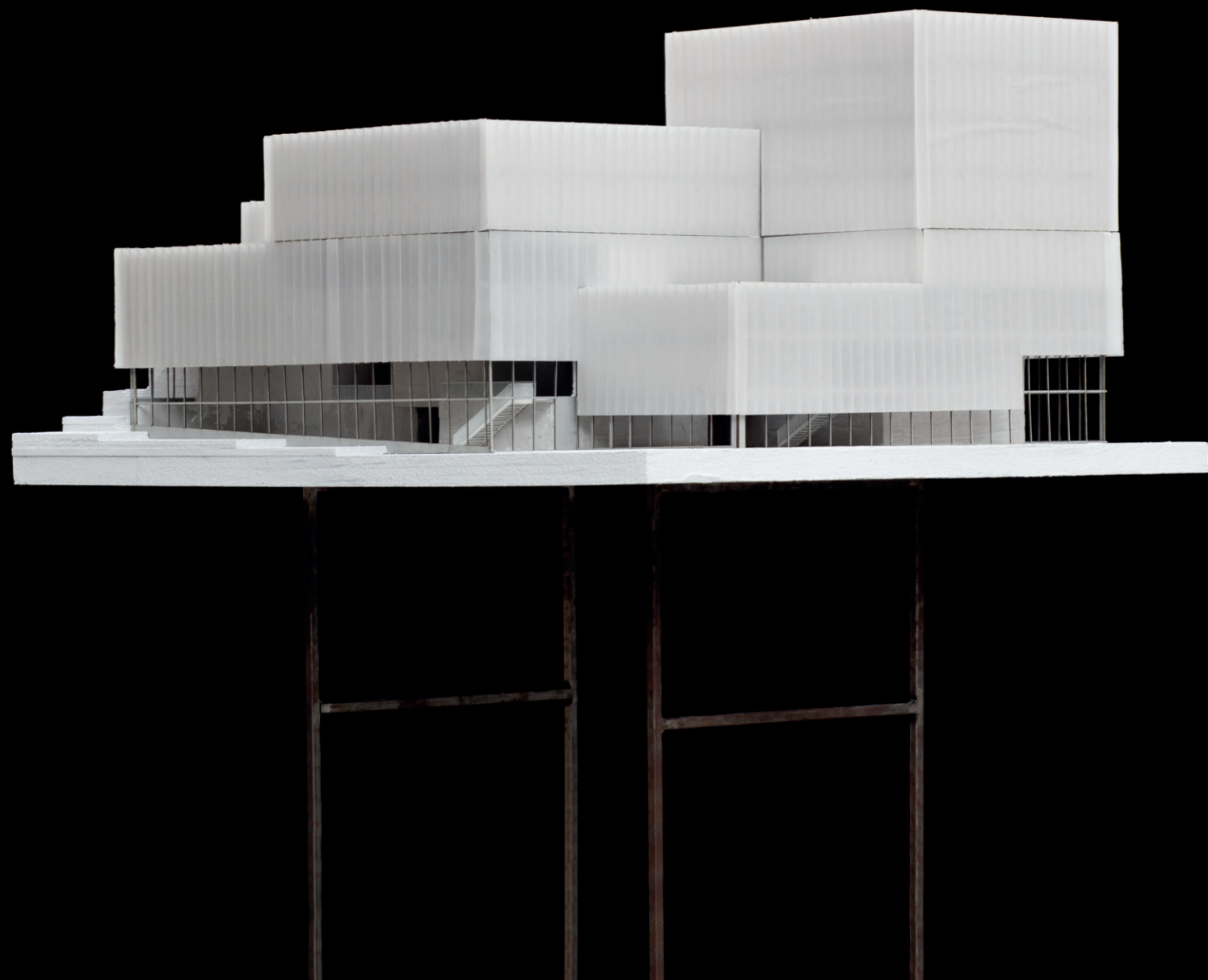


section



plan





Nowadays, data storage tends to become dematerialized and lost in the digital nebula. The aim of the project is to express on an urban and typological scale the physicality and corporeality of the containers in which books are stored.

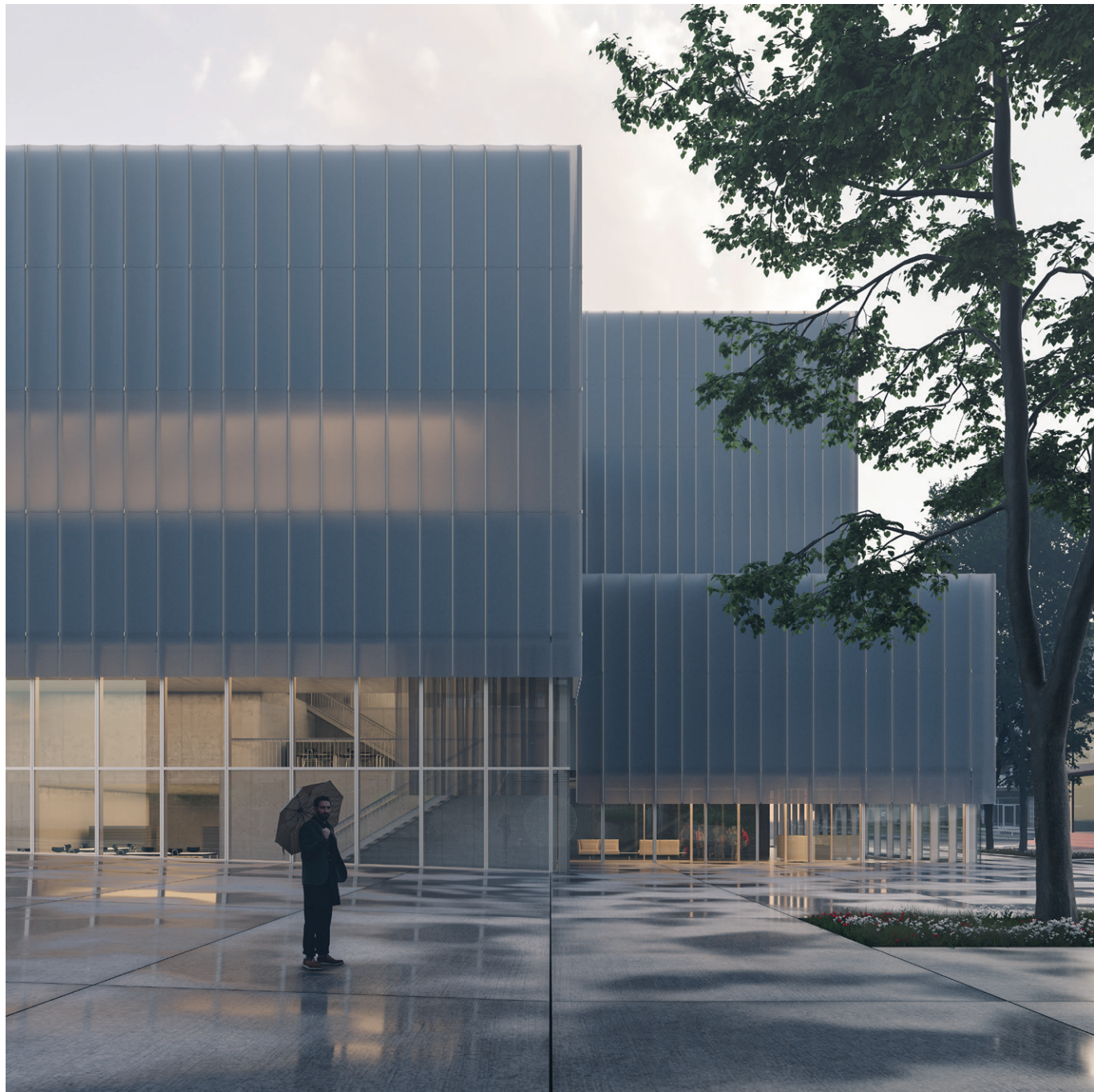
The urban form is a composition of different volumes. A *mise en scène* of the storage spaces. This composition is in dialogue with the different scales of the city, from the university district of the early 20th century to the large scale of the hospital complex in transformation.

All these volumes are covered by a translucent glass envelope that slightly reveals the interplay of spaces produced inside. Under this delicate dress, a choreography of spaces composed by the boxes is displayed. Called by the void, we circulate in a continuous space composed by the solids. It is by sneaking between these abstract masses that we understand the range of what the library contains. A tangible cultural treasure.

—

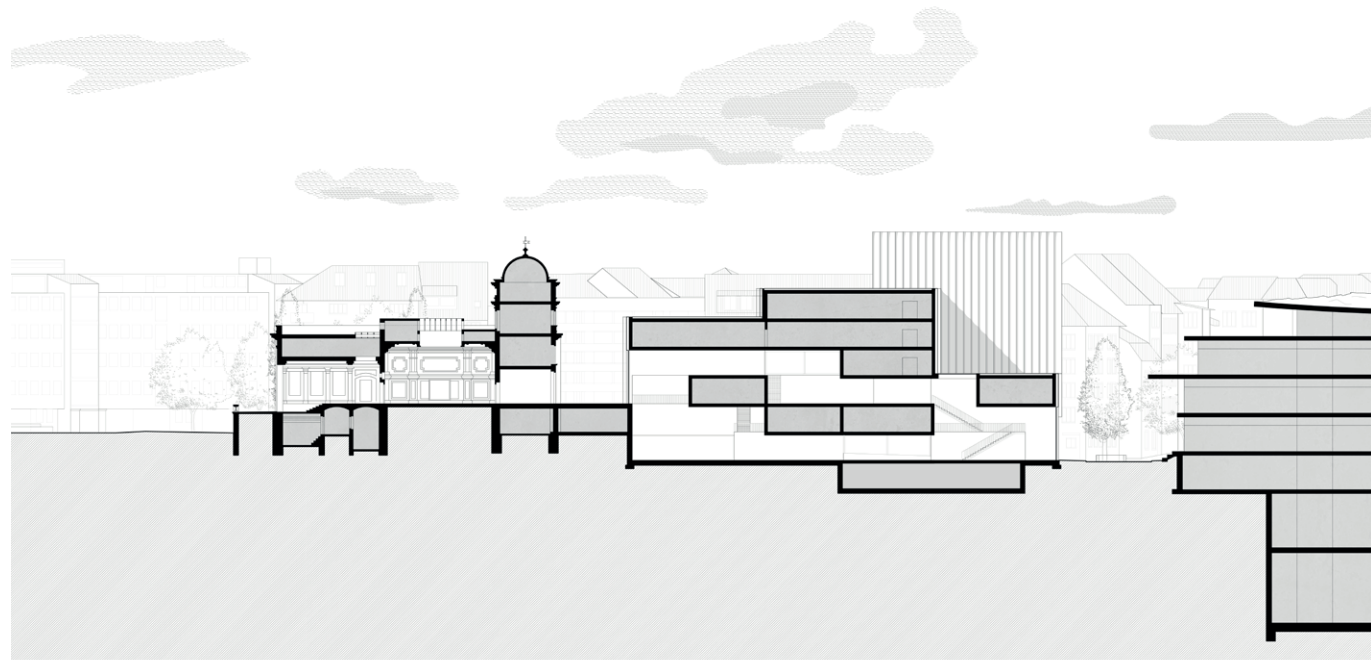
Atelier Miller
with David Abrantes Pinto

Mise en scène A library in Basel

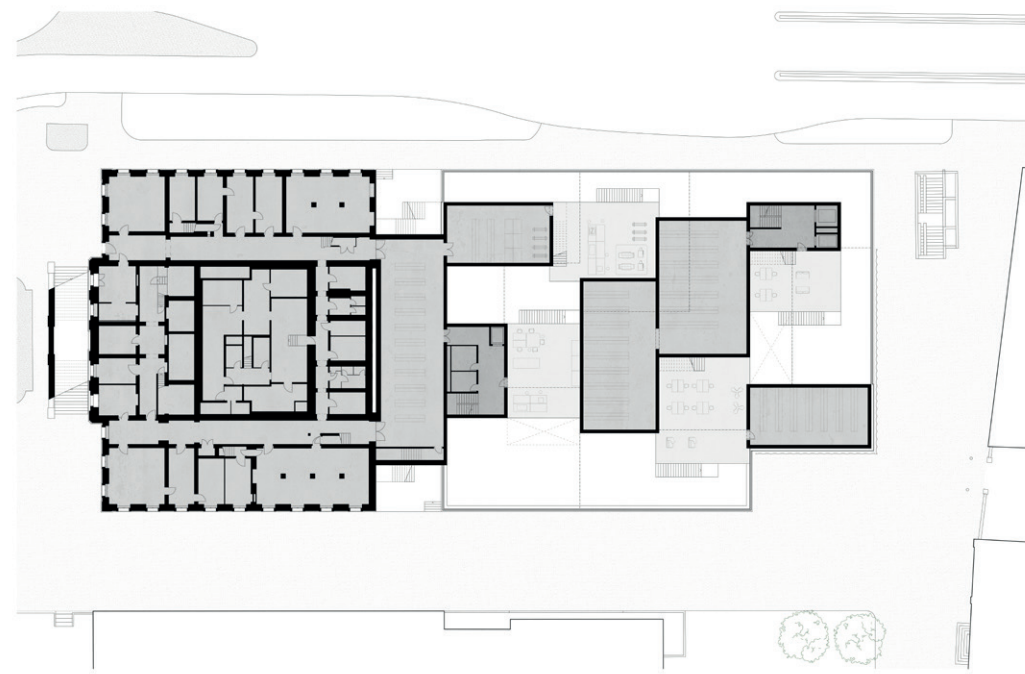


situation

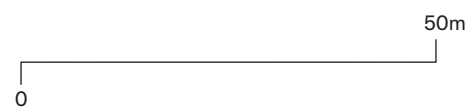




long section



first floor





According to Alberti, the street is the public space par excellence. Inspired by this public vocation, the project tends not to see the road only in terms of necessity or convenience. On the contrary, it is a question of finding a path which highlights the cultural landscape of the Renaissance villas along the Terraglio and the surrounding countryside which is indissociable from them.

The territorial figure drawn by the route is the result of a research on the site in order to define the centres of interest for the passage of the street such as: the historical importance or the quality of the natural spaces. Thus, a villa, a riverbank or an alley of trees becomes a place of passage for cyclists and pedestrians of the region.

The focal point of this research is a park with an infrastructure. An inhabited, linear walkway along the railway tracks raises the road to the status of a monument, adding to the system of adjacent villas. The landscape structure of the park is based on the one established in antiquity by the centuriation, to which is added the orthogonality of the disappeared orchards to create pockets, new landscape pieces.

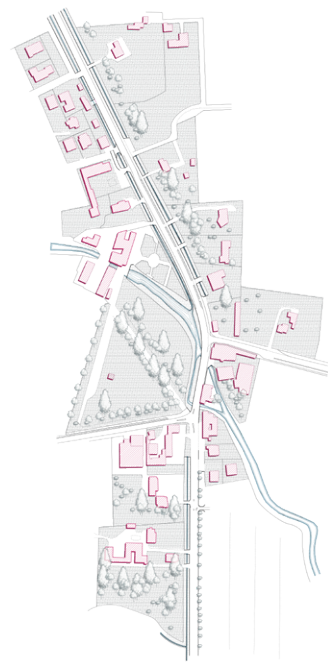
—

Atelier Bonnet
Accademia di Architettura, Mendrisio

À Bicyclette Cultural landscape in Veneto



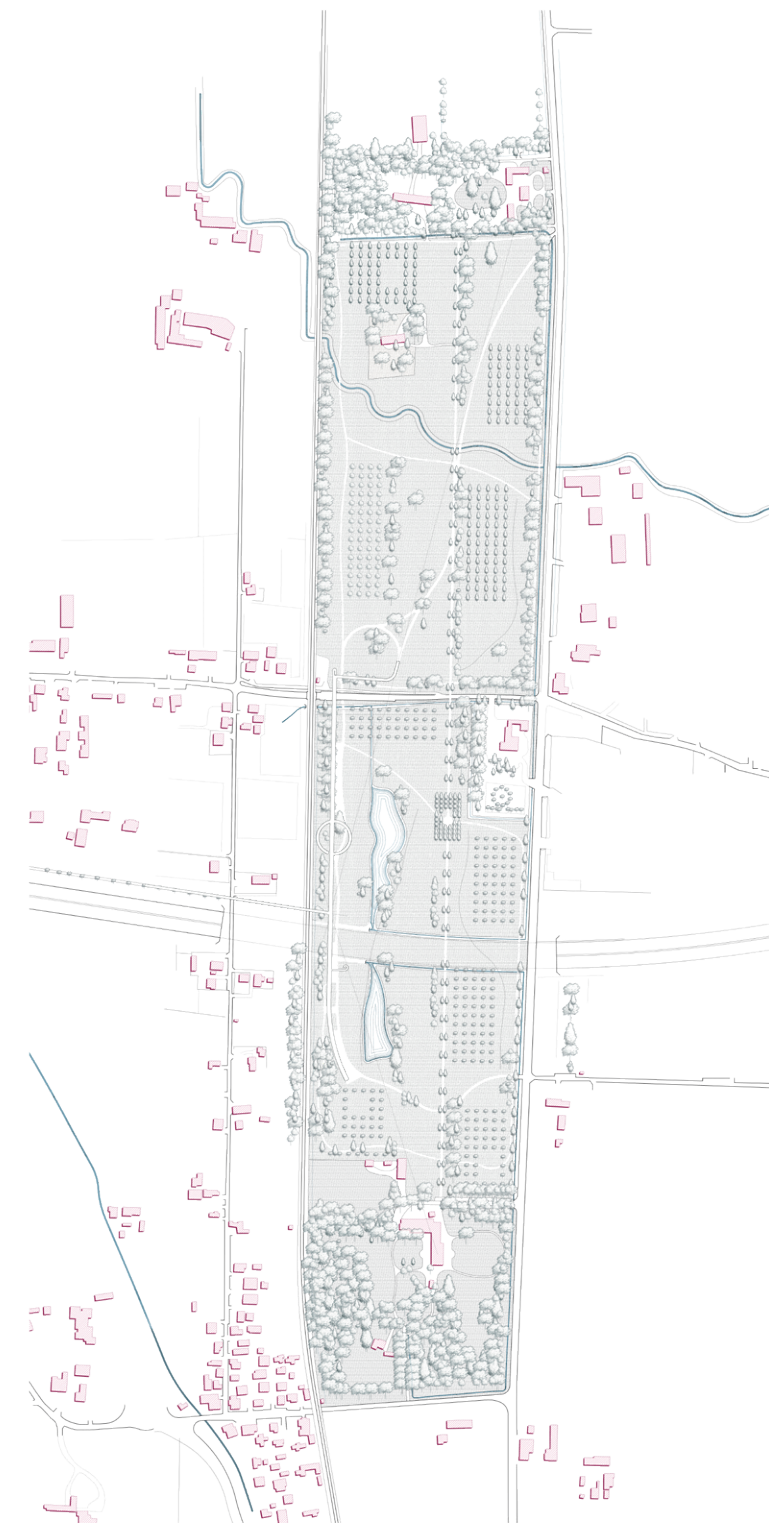
Sant'Antonio, Villa Candiani



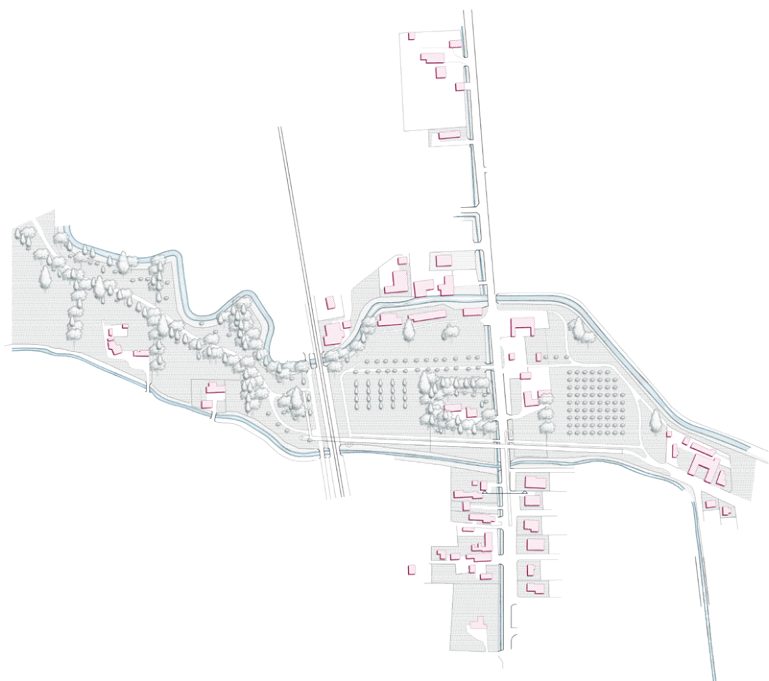
Marocco, Villa Vopli



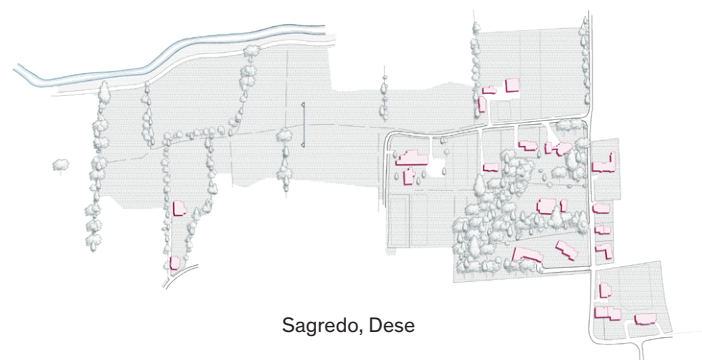
Dosson, Villa Reali



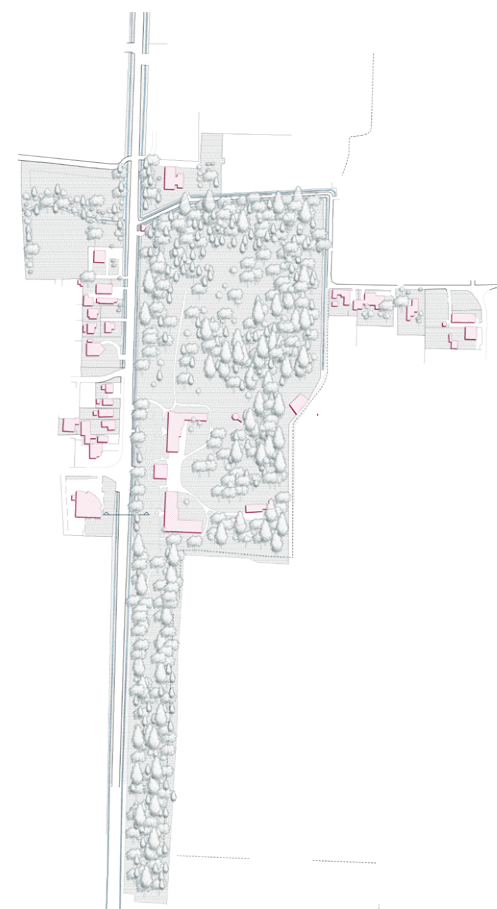
The park, Villa Marchesi, Marcello and napoleon



Fiume Zero, Mogliano



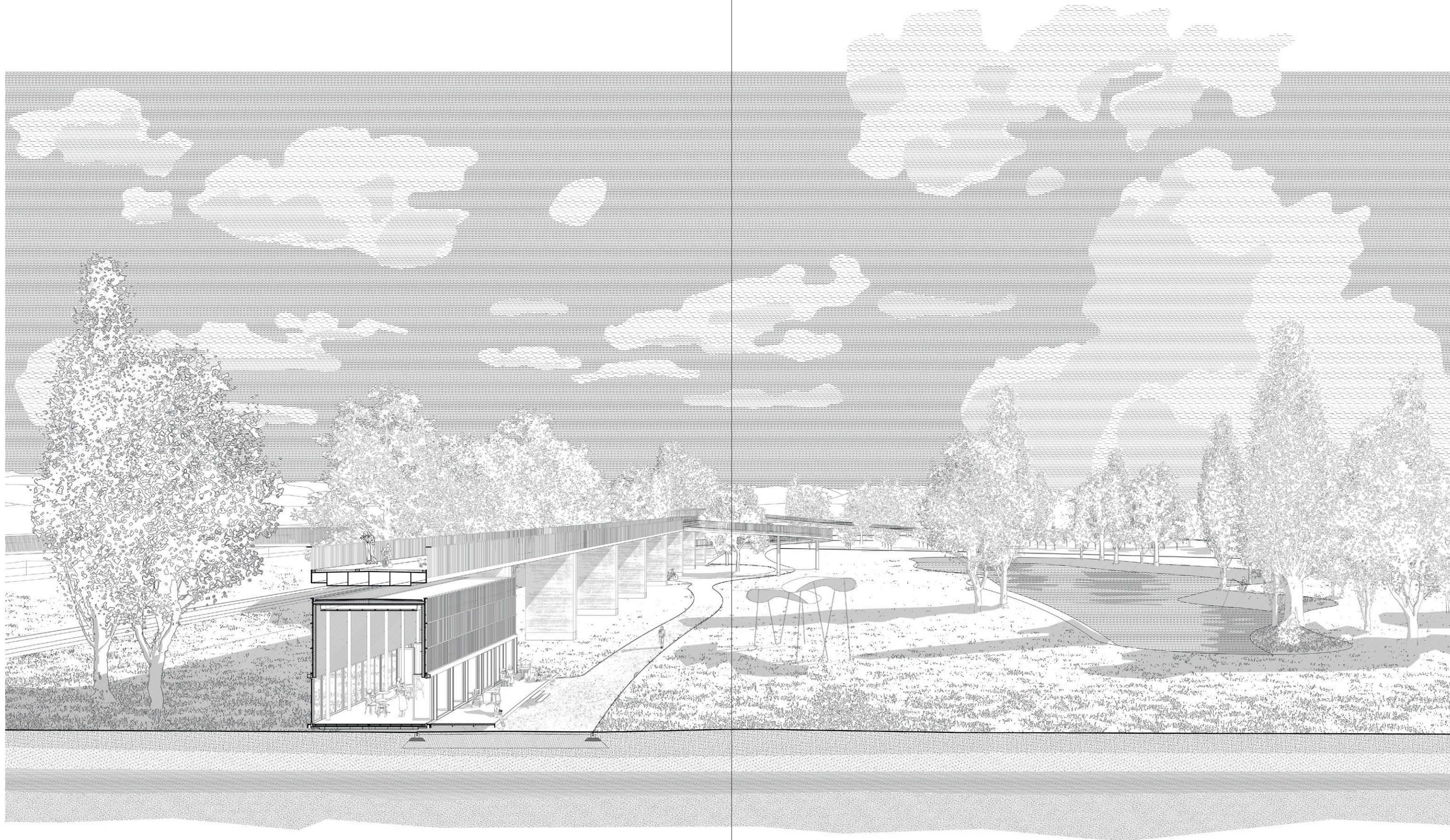
Sagredo, Dese

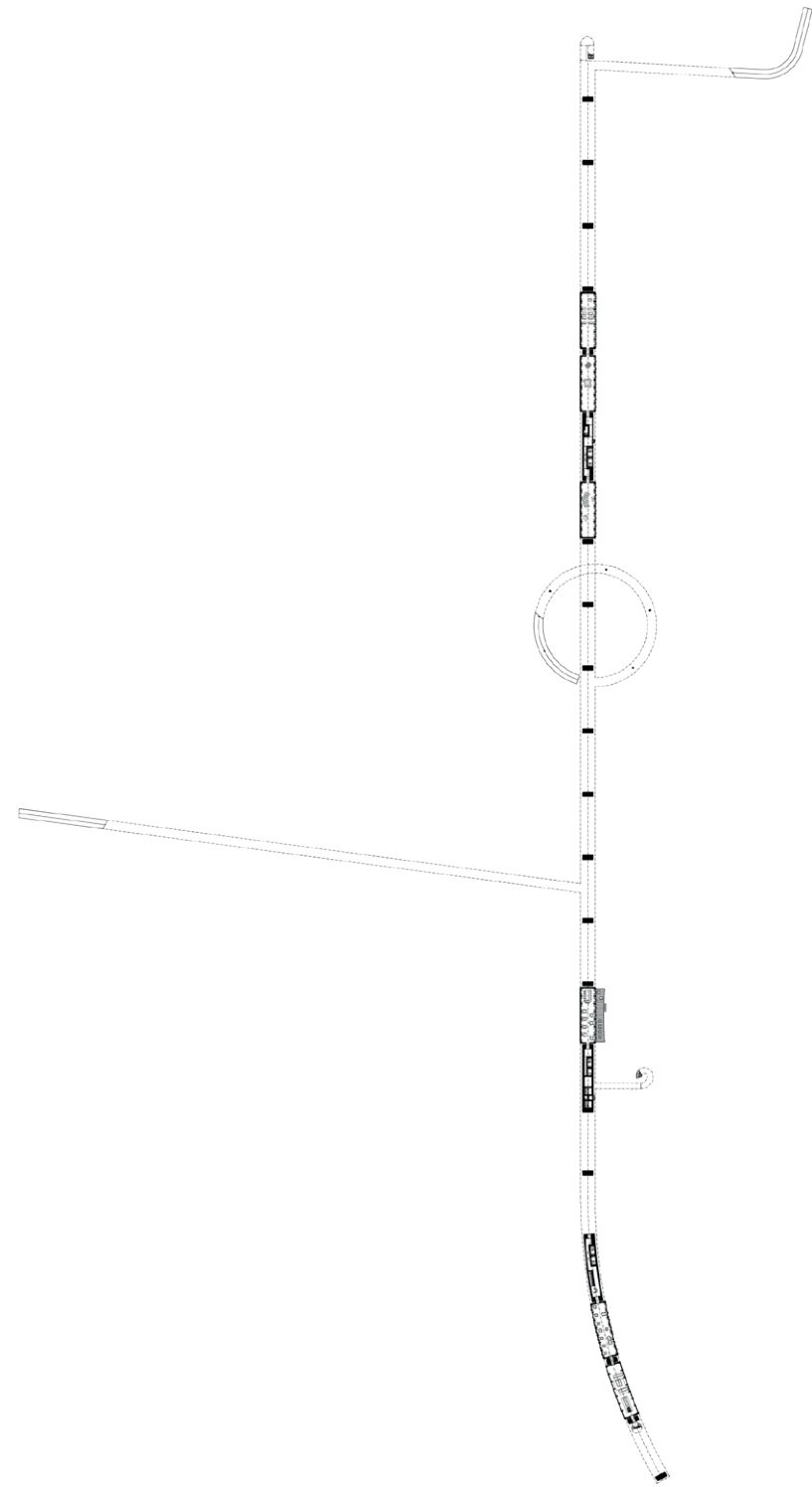


Terraglio, Villa Albritti franchetti

excerpts from the course

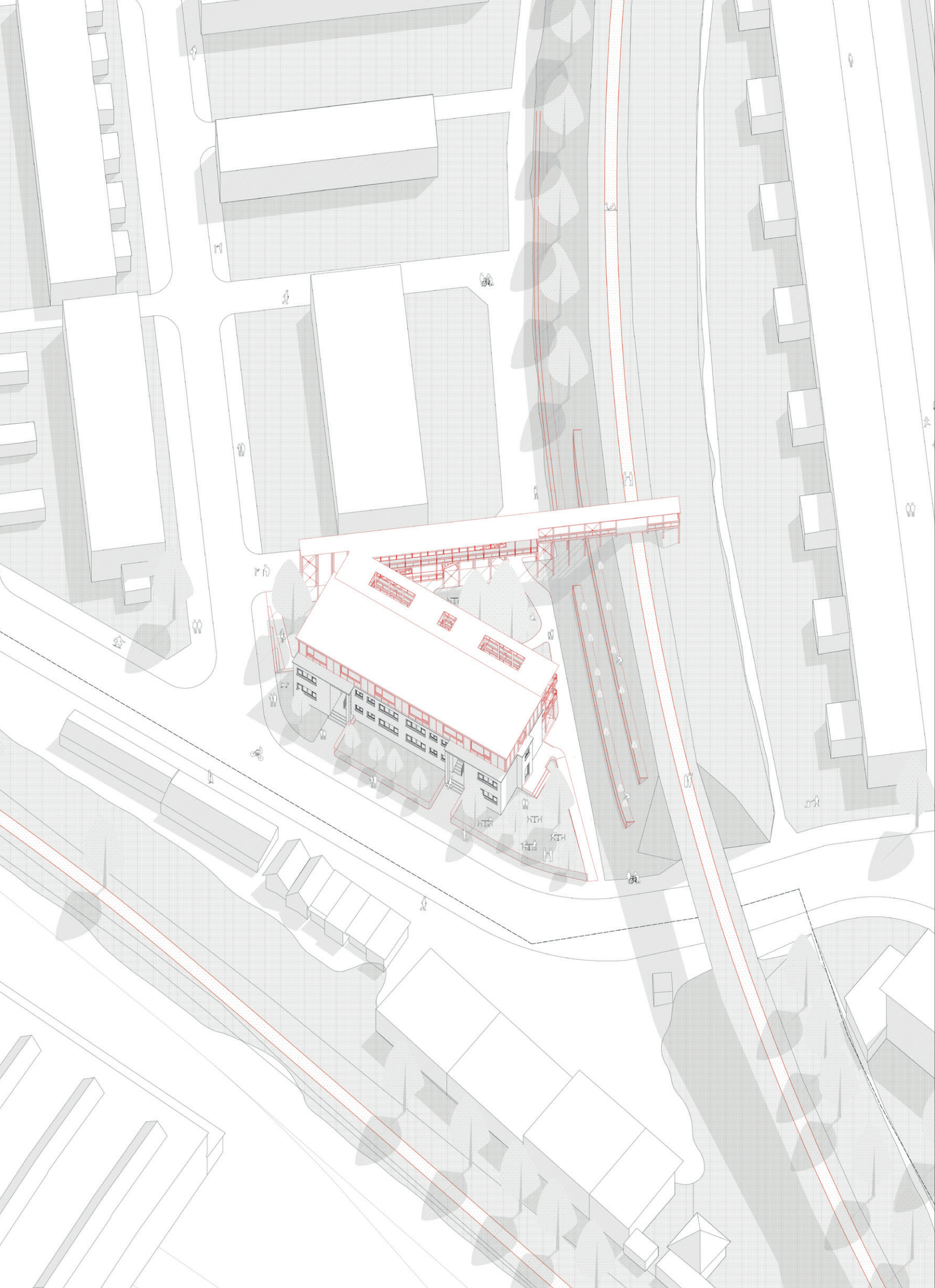






plan of the inhabited walkway





The atelier's work focuses on the complex of buildings constructed in the 1930s on the occasion of the first national housing exhibition (Wohnungsausstellung Basel).

The first phase concerns the whole of the now disused railway infrastructure for goods. It becomes a great way to create new connections with the neighbouring built and landscape structures. In addition, the embankments offer the possibility of direct, local, urban agriculture for the community. The intervention at this scale is limited to the redevelopment of the roads into footpaths and the adaptation of the slopes into cultivable terraces.

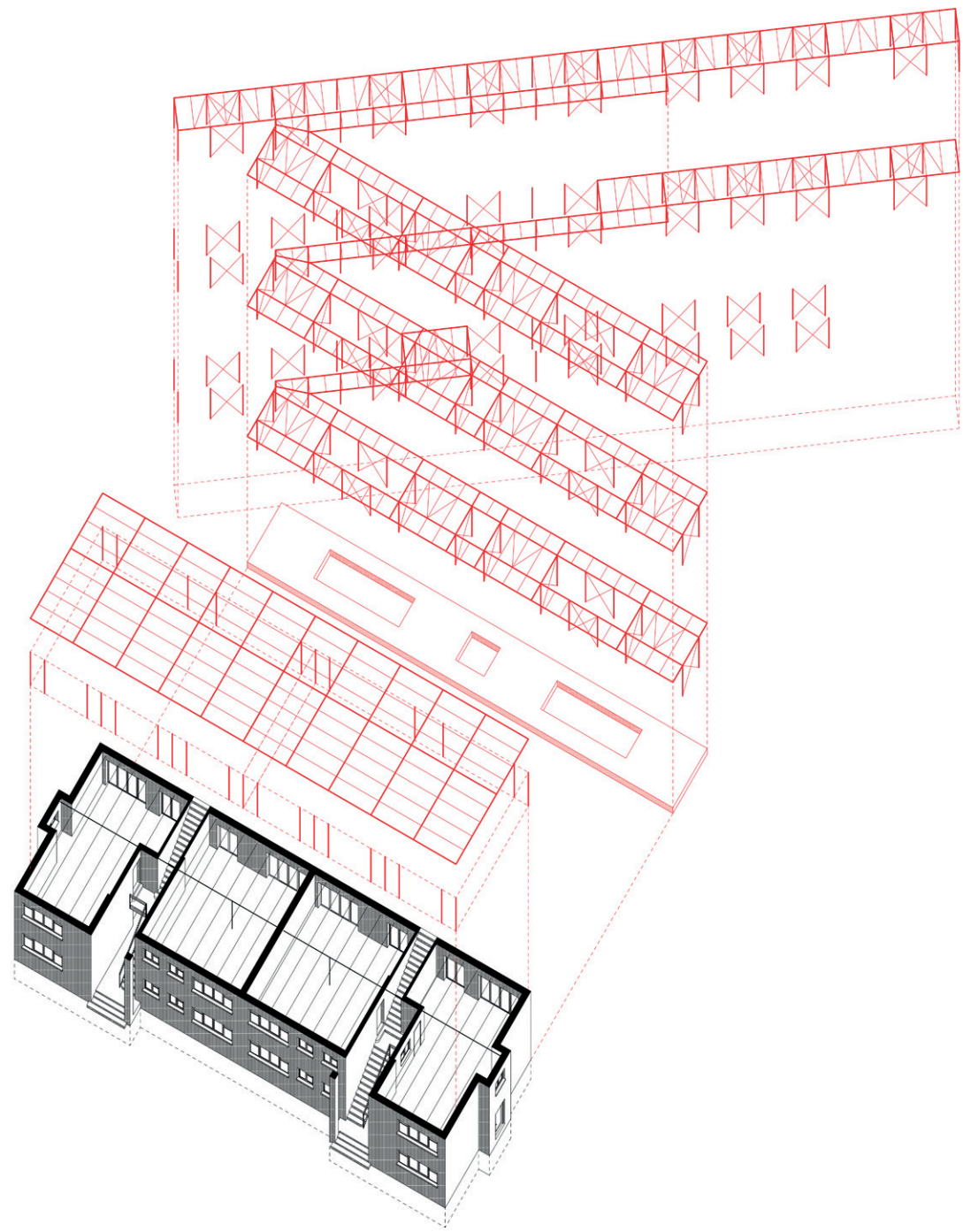
The second intervention proposes the transformation of the work of the architect Maurice Brillard. The singular position of the building along the road generates a triangular space at the back. Here, a new structure provides access to the upper level, covered outdoor spaces for the dwellings and an open garden on the embankment.

The function on the ground floor is rethought as a public programme: a café and a grocery shop. The existing typologies on the first floor are reinterpreted and adapted to current requirements. An upper level is added in the extension of the existing staircase, compensating for the loss of the ground floor flats. The construction system is a light steel structure. The exposed metal joists are reminiscent of the original construction with its slab-on-grade slabs.

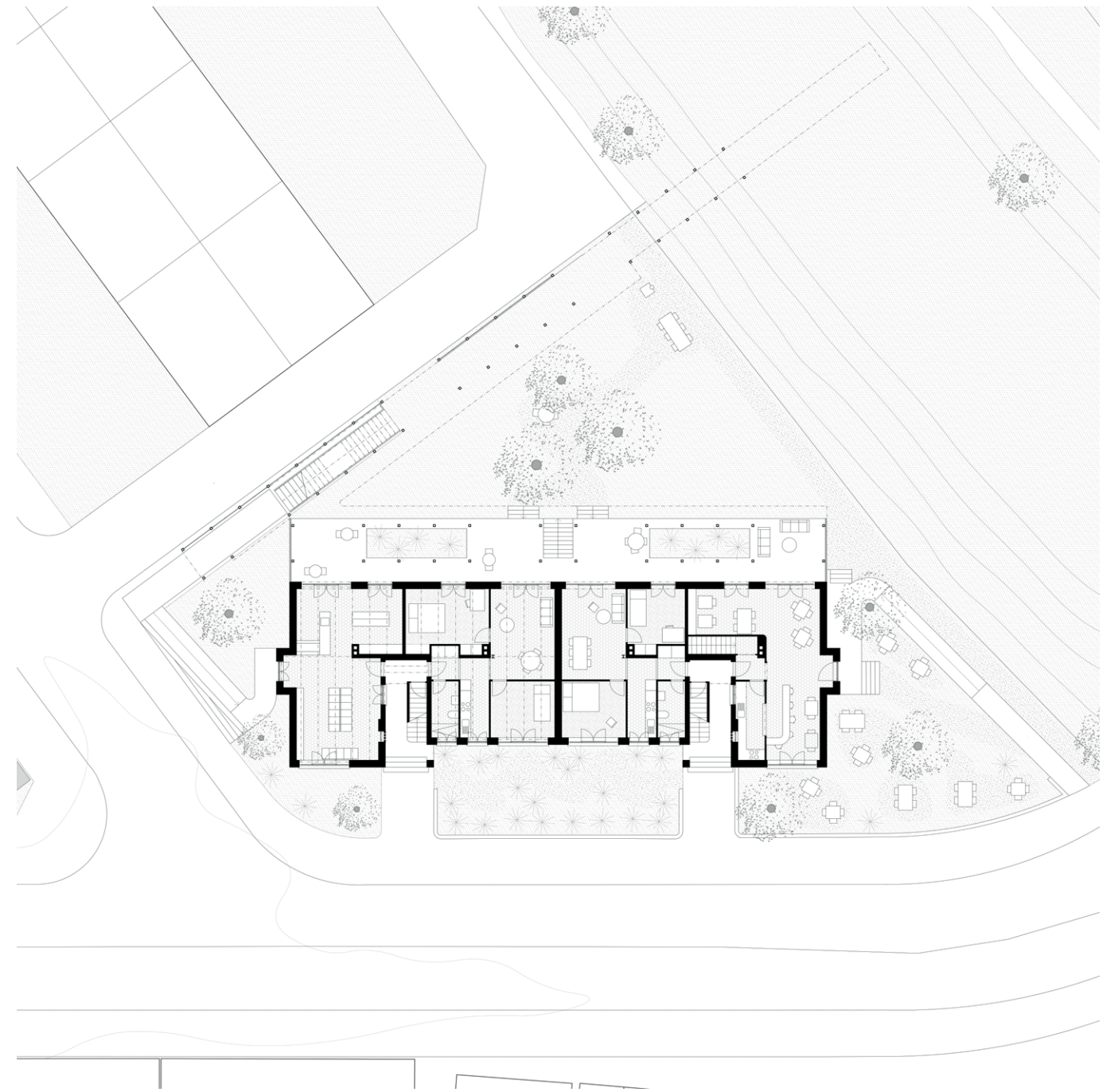
—

Atelier Tropeano
with Roc-Andrea Rüegg

Röstigraben Wohnsiedlung à Bâle

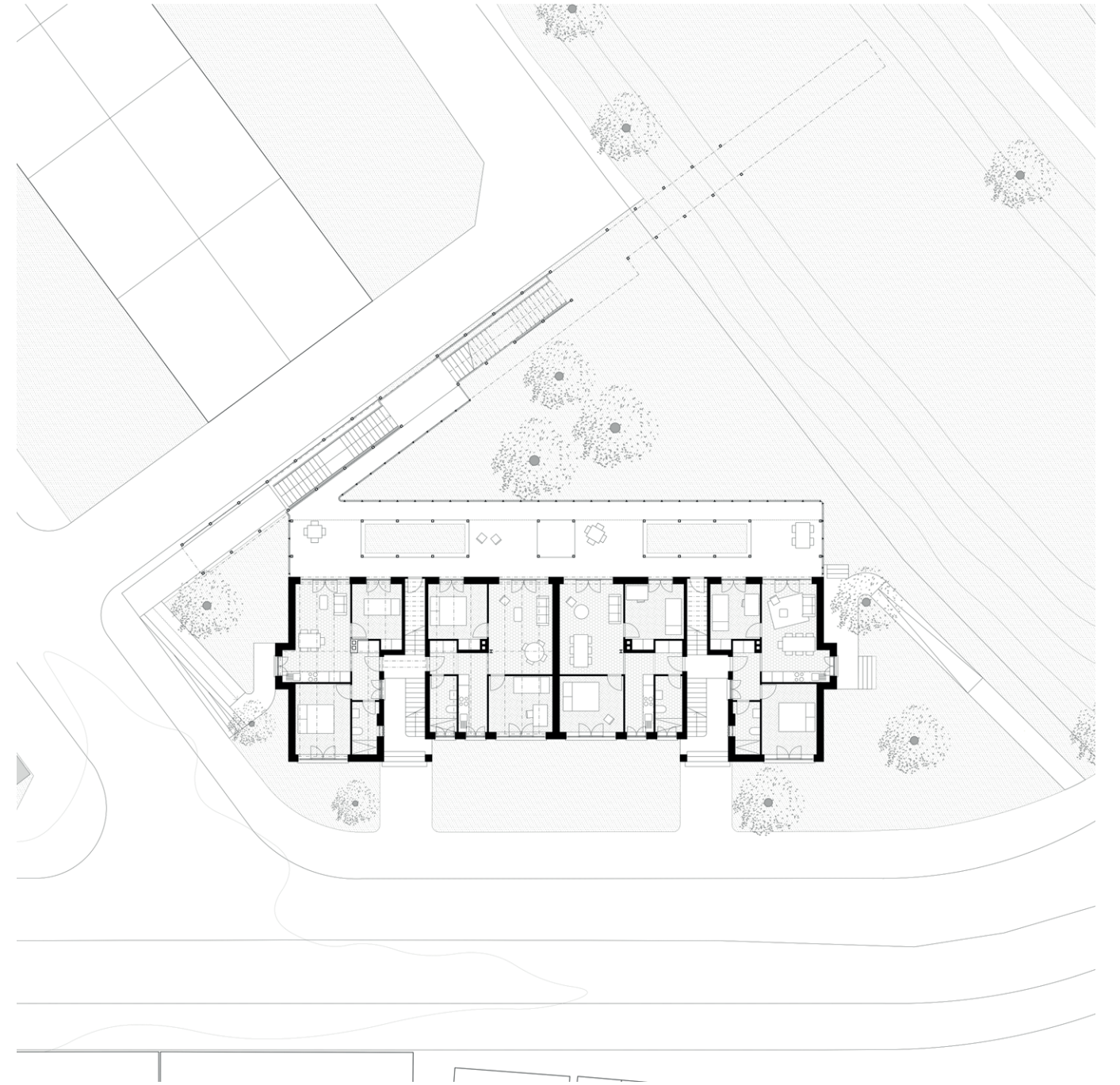


isometric view of the structure



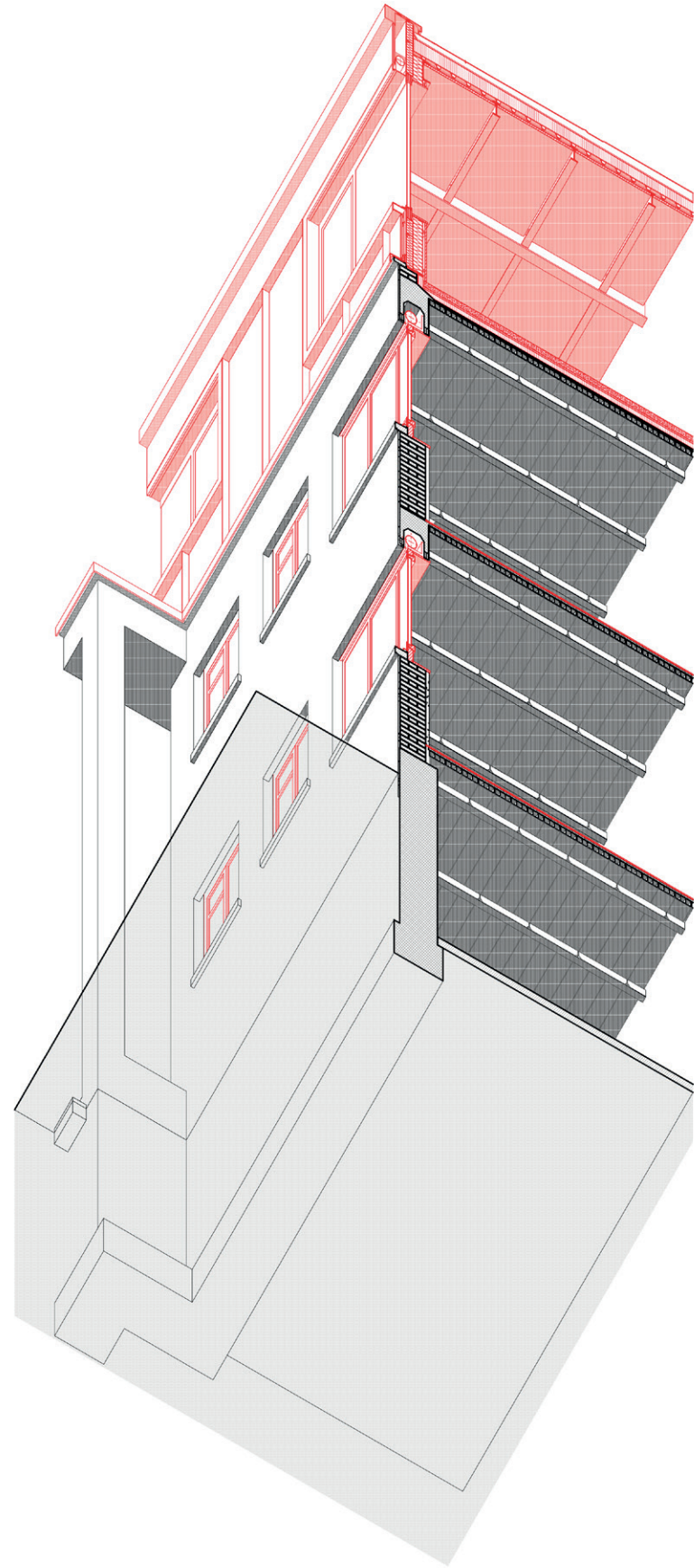
ground floor



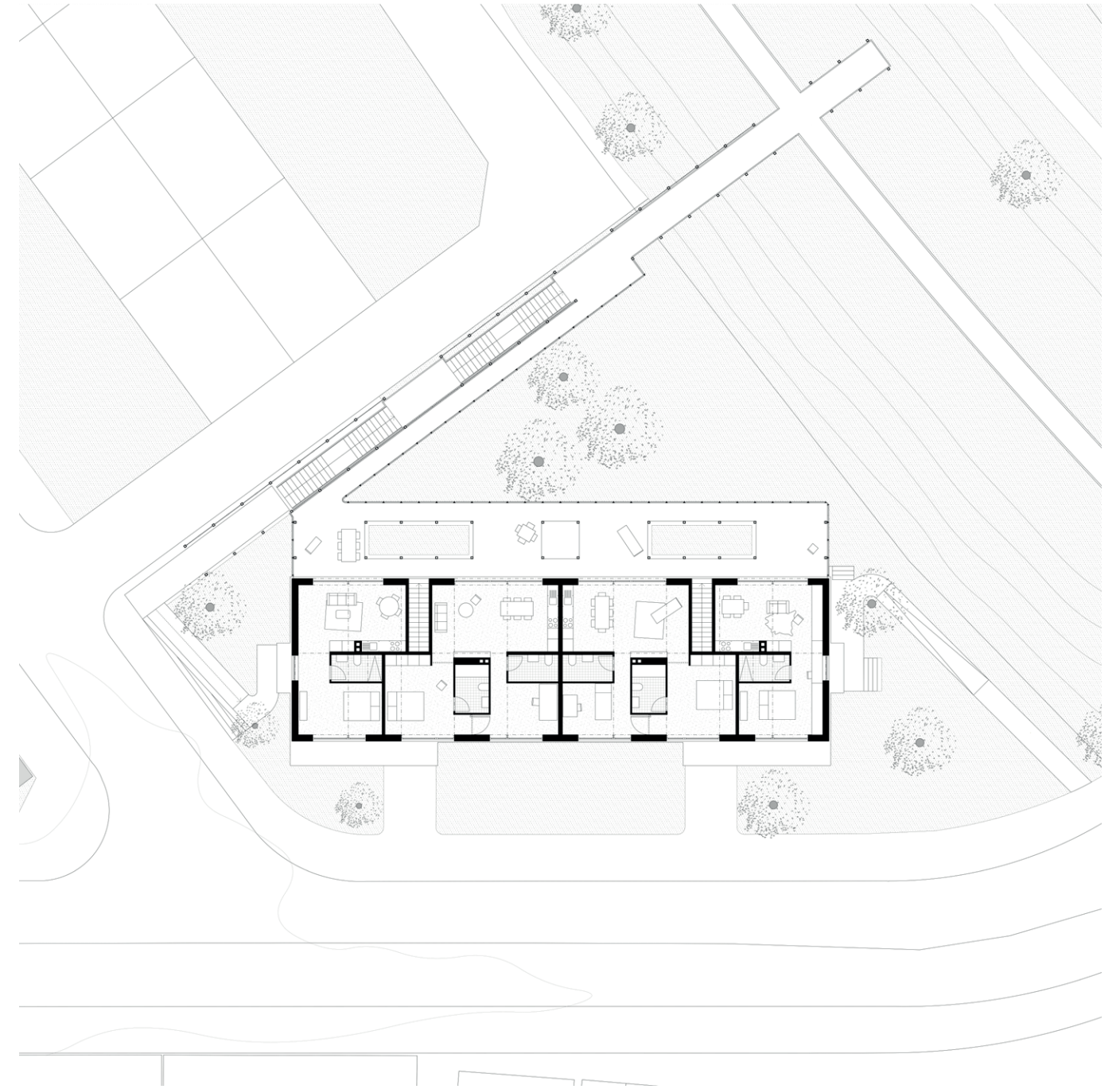


first floor





detailed isometric view



added floor



